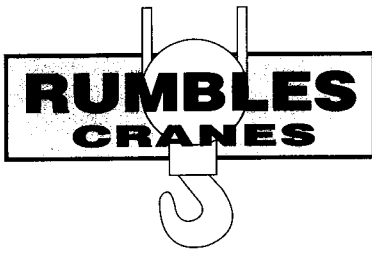


**KATO NK-500E-3**  
**50 Tonne Hydraulic crane**  
 (chart 1)

BS 1757 : 1986  
 Based on Din 15019-2  
 75% of loads tipping

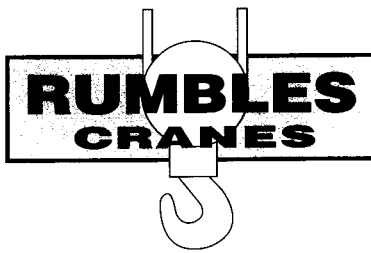
Outriggers fully extended with front jack - 360 Degree radius Outriggers fully extended without front jack - Over side and over rear								Without legs over side and rear
Working Radius (m)	10.8m Boom	14.45m Boom	18.1m Boom	21.75m Boom	25.4m Boom	32.7m Boom	40.0m Boom	10.8m Boom
3.00	50.00	28.00	28.00	24.00				8.00
3.50	42.20	28.00	28.00	24.00	18.00			6.40
4.00	37.00	28.00	28.00	24.00	18.00			5.10
4.50	33.00	28.00	28.00	24.00	18.00			4.20
5.00	30.20	28.00	28.00	24.00	18.00	13.00		3.40
5.50	27.50	26.50	25.60	23.20	18.00	13.00		2.80
6.00	25.00	24.00	23.50	21.50	18.00	13.00		2.30
6.50	22.70	22.30	21.80	19.90	18.00	13.00	7.50	1.90
7.00	20.70	20.30	20.00	18.40	16.80	13.00	7.50	1.60
7.50	18.90	18.60	18.50	17.10	15.70	13.00	7.50	1.25
8.00	17.40	17.10	17.00	15.90	14.80	12.30	7.50	1.00
8.50	15.65	15.40	15.40	14.65	14.00	11.60	7.50	
9.00	14.00	13.85	13.85	13.50	13.20	11.00	7.50	
9.50		12.50	12.50	12.30	12.20	10.50	7.50	
10.00		11.40	11.40	11.20	11.15	10.00	7.30	
11.00		9.50	9.50	9.45	9.40	9.10	6.80	
12.00		8.00	8.00	7.95	7.90	8.30	6.30	
13.00		6.80	6.80	6.70	6.60	7.40	5.90	
14.00			5.80	5.70	5.60	6.40	5.50	
16.00			4.25	4.10	4.00	4.80	4.70	
18.00				2.90	2.80	3.60	4.00	
20.00				2.00	1.85	2.70	3.25	
22.00					1.20	2.00	2.50	
24.00					0.60	1.40	1.90	
26.00						0.90	1.40	
28.00						0.50	1.00	
30.00							0.65	
31.00							0.50	
Std Hook	50 ton	for 28 tonne						
Hook Weight	500 kg	330 kg						
Parts of line	12	7	7	6	5	4	3	
Critical boom angle						25	35	



**KATO NK-500E-3**  
**50 Tonne Hydraulic crane**  
 (chart 2)

BS 1757 : 1986  
 Based on Din 15019-2  
 75% of loads tipping

Outriggers intermediately extended with front jack - 360 Degree radius							
Outriggers intermediately extended without front jack - Over side and over rear							
Working Radius (m)	10.8m Boom	14.45m Boom	18.1m Boom	21.75m Boom	25.4m Boom	32.7m Boom	40.0m Boom
3.00	32.00	24.00	20.00	18.00			
3.50	32.00	24.00	20.00	18.00	15.00		
4.00	32.00	24.00	20.00	18.00	15.00		
4.50	27.00	24.00	20.00	18.00	15.00		
5.00	20.20	20.00	20.00	18.00	15.00	10.00	
5.50	15.85	15.70	15.60	15.30	15.00	10.00	
6.00	12.85	12.65	12.55	12.45	12.35	10.00	
6.50	10.60	10.40	10.30	10.10	10.00	10.00	6.00
7.00	8.90	8.70	8.60	8.50	8.40	9.45	6.00
7.50	7.50	7.35	7.25	7.15	7.10	8.10	6.00
8.00	6.40	6.25	6.20	6.10	6.00	7.00	6.00
9.00	4.80	4.60	4.55	4.40	4.30	5.30	6.00
10.00		3.25	3.25	3.15	3.05	4.10	4.65
11.00		2.25	2.25	2.15	2.05	3.05	3.70
12.00		1.45	1.45	1.35	1.25	2.20	2.90
13.00						1.55	2.25
14.00						1.05	1.70
15.00							1.25
Std Hook	50 ton	for 28 tonne					
Hook Weight	500 kg	330 kg					
Parts of line	12	7	7	6	5	4	3
Critical boom angle			40	51	58	62	66



## KATO NK-500E-3

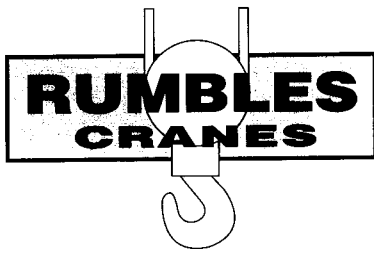
### 50 Tonne Hydraulic crane

(chart 3)

BS 1757 : 1986  
Din 15019-2  
75% of loads tipping

Outriggers fully extended with front jack - 360 Degree radius						
Outriggers fully extended without front jack - Over side and over rear						
40m Boom + 9.2m jib						
Boom Angle Degrees	Offset 5 degrees		Offset 25 degrees		Offset 45 degrees	
	Working Radius (m)	Load (tonne)	Working Radius (m)	Load (tonne)	Working Radius (m)	Load (tonne)
81	8.90	3.50	11.80	2.30	13.80	1.25
79	10.90	3.50	13.50	2.30	15.35	1.25
78	11.80	3.50	14.35	2.30	16.20	1.24
77	12.70	3.32	15.20	2.23	17.00	1.22
76	13.50	3.13	16.00	2.16	17.80	1.20
75	14.40	2.97	16.80	2.09	18.55	1.18
74	15.25	2.82	17.65	2.02	19.30	1.17
72	16.85	2.55	19.25	1.89	20.80	1.13
70	18.50	2.33	20.90	1.76	22.25	1.10
68	20.05	2.14	22.40	1.65	23.70	1.07
66	21.60	1.97	23.90	1.56	25.20	1.05
64	23.15	1.83	25.30	1.47	26.55	1.03
62	24.65	1.71	26.75	1.38	27.90	1.01
60	26.15	1.51	28.20	1.30	29.25	0.99
59	26.85	1.38	28.85	1.26	29.90	0.98
58	27.45	1.23	29.50	1.15	30.50	0.97
56	28.75	1.02	30.75	0.94	31.70	0.90
54	30.00	0.80	31.90	0.75	32.80	0.72
52	31.15	0.60	33.05	0.58	33.80	0.57
Std Hook	for 4 ton					
Hook Weight	120 kg					
Parts of line	1 part					
Critical boom angle	51 Degrees					

40m Boom + 15m jib						
Boom Angle Degrees	Offset 5 degrees		Offset 25 degrees		Offset 45 degrees	
	Working Radius (m)	Load (tonne)	Working Radius (m)	Load (tonne)	Working Radius (m)	Load (tonne)
81	10.70	2.50	15.50	1.20	18.80	0.70
80	11.75	2.50	16.40	1.20	19.55	0.70
79	12.85	2.50	17.35	1.20	20.40	0.69
78	14.00	2.50	18.30	1.19	21.25	0.69
77	15.00	2.35	19.20	1.16	22.10	0.68
76	15.95	2.22	20.00	1.13	22.90	0.67
75	16.90	2.10	20.95	1.10	23.70	0.65
74	17.85	1.98	21.85	1.07	24.50	0.64
72	19.75	1.78	23.60	1.03	26.15	0.63
70	21.50	1.61	25.35	0.98	27.75	0.61
68	23.40	1.48	27.05	0.94	29.25	0.60
66	25.10	1.36	28.70	0.91	30.75	0.58
64	26.85	1.26	30.30	0.88	32.15	0.57
62	28.45	1.16	31.85	0.85	33.55	0.56
60	30.05	1.08	33.35	0.81	34.90	0.56
58	31.70	1.01	34.75	0.77	36.25	0.55
57	32.40	0.90	35.40	0.75	36.85	0.55
56	33.05	0.80	36.10	0.70	37.00	0.54
54	34.40	0.60	37.40	0.55	38.65	0.54
Std Hook	for 4 ton					
Hook Weight	120 kg					
Parts of line	1 part					
Critical boom angle	53 Degrees					

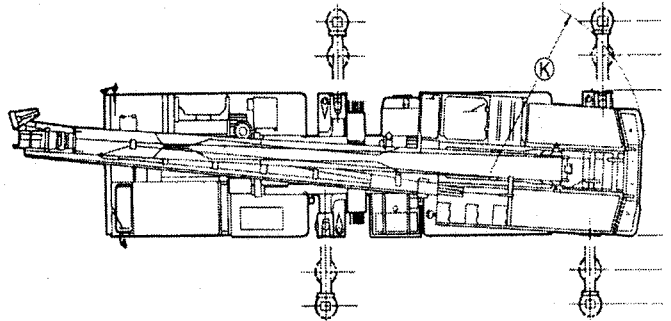
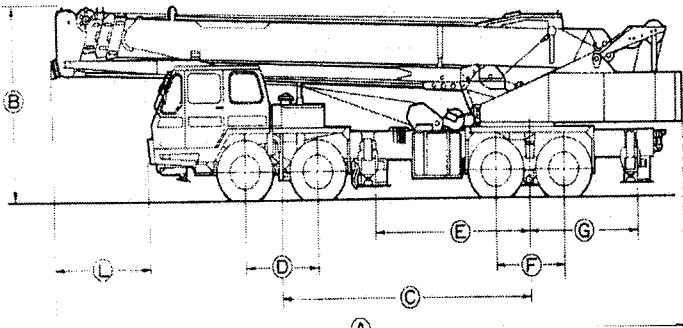


**KATO NK-500E-3**  
**50 Tonne Hydraulic crane**  
 (chart 4)

BS 1757 : 1986  
 Din 15019-2  
 75% of loads tipping

Outriggers Intermediately extended with front jack - 360 Degree radius						
Outriggers intermediately extended without front jack - Over side and over rear						
40m Boom + 9.2m jib						
Boom Angle Degrees	Offset 5 degrees		Offset 25 degrees		Offset 45 degrees	
	Working Radius (m)	Load (tonne)	Working Radius (m)	Load (tonne)	Working Radius (m)	Load (tonne)
81	8.90	3.50	11.80	2.30	13.80	1.25
79	10.90	3.50	13.50	2.30	15.35	1.25
78	11.80	3.43	14.35	2.30	16.20	1.24
77	12.45	2.88	15.15	2.22	17.00	1.22
76	13.20	2.44	15.85	1.92	17.80	1.20
75	13.95	2.06	16.60	1.63	18.55	1.18
74	14.80	1.73	17.30	1.40	19.30	1.17
Std Hook	for 4 ton					
Hook Weight	120 kg					
Parts of line	1 part					
Critical boom angle	73 Degrees					

40m Boom + 15m jib						
Boom Angle Degrees	Offset 5 degrees		Offset 25 degrees		Offset 45 degrees	
	Working Radius (m)	Load (tonne)	Working Radius (m)	Load (tonne)	Working Radius (m)	Load (tonne)
81	10.70	2.50	15.50	1.20	18.80	0.70
80	11.75	2.50	16.40	1.20	19.55	0.70
79	12.85	2.50	17.35	1.20	20.40	0.69
78	14.00	2.50	18.30	1.19	21.25	0.69
77	14.90	2.20	19.20	1.16	22.10	0.68
76	15.70	1.87	20.00	1.13	22.90	0.67
75	16.60	1.58	20.95	1.09	23.75	0.65
Std Hook	for 4 ton					
Hook Weight	120 kg					
Parts of line	1 part					
Critical boom angle	74 Degrees					



Office: 32-34 Bedford Street Queanbeyan NSW 2620 • Postal: PO Box 61 Campbell ACT 2612  
 Phone: (02) 6299 6100 • Fax: (02) 6299 6101 • Email: info@rumblescranes.com.au